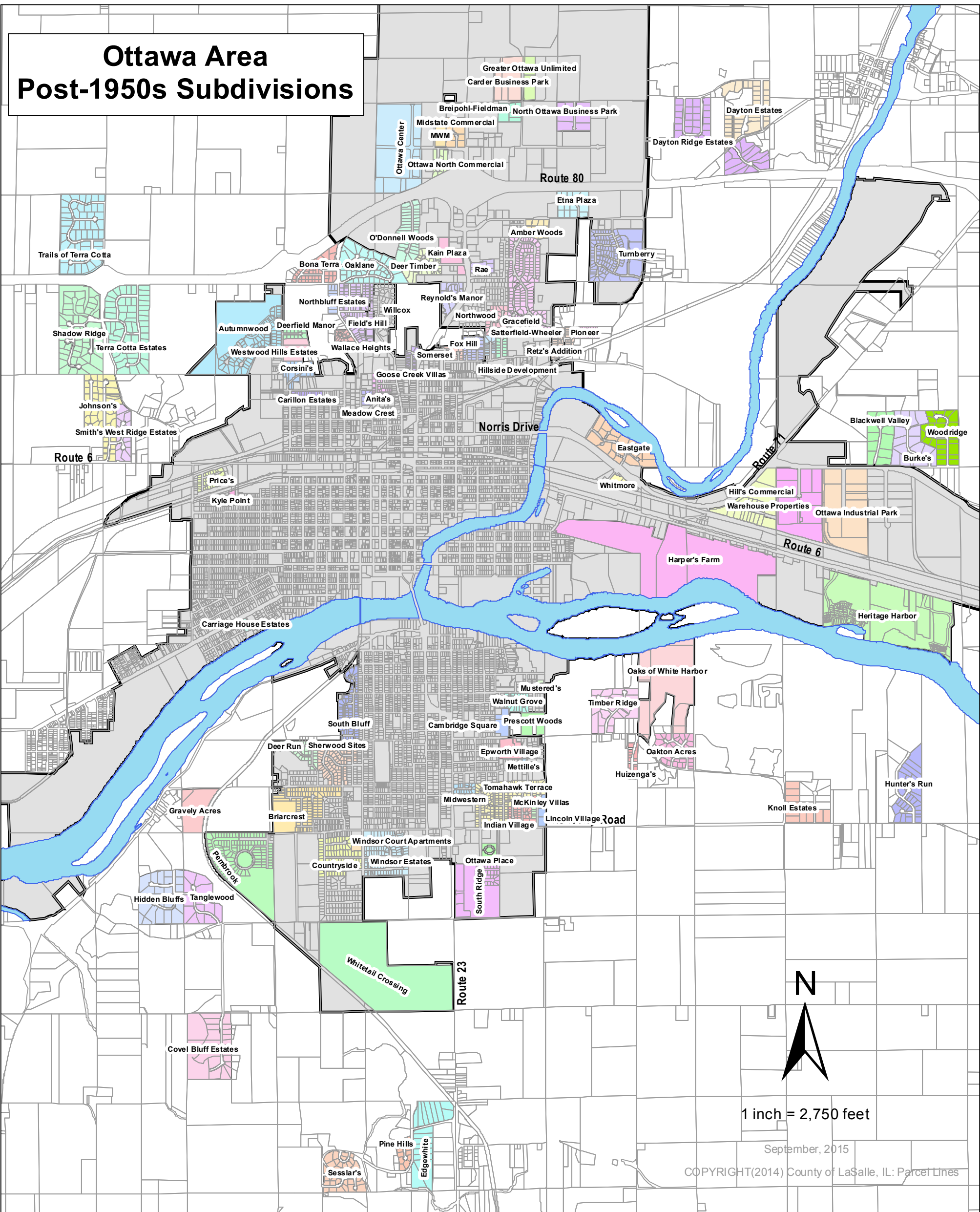


Ottawa Area Post-1950s Subdivisions



September, 2015

COPYRIGHT(2014) County of LaSalle, IL: Parcel Lines

Post-1950's Subdivisions					
Name					
Amber Woods	Covel Bluff Estates	Harper's Farm	Mettille's	Pine Hills	Terra Cotta Estates
Anita's	Dayton Estates	Heritage Harbor	Midstate Commercial	Pioneer	Timber Ridge
Autumnwood	Dayton Ridge Estates	Hidden Bluffs	Midwestern	Prescott Woods	Tomahawk Terrace
Blackwell Valley	Deer Run	Hill's Commercial	Mustered's	Price's	Trails of Terra Cotta
Bona Terra	Deer Timber	Hillside Development	North Ottawa Business Park	Rae	Turnberry
Breipohl-Fieldman	Deerfield Manor	Huizenga's	Northbluff Estates	Retz's Addition	Wallace Heights
Briarcrest	Eastgate	Hunter's Run	Northwood	Reynold's Manor	Walnut Grove
Burke's	Edgewhite	Indian Village	O'Donnell Woods	Satterfield-Wheeler	Warehouse Properties
Cambridge Square	Epworth Village	Johnson's	Oaklane	Sessler's	Westwood Hills Estates
Carder Business Park	Etna Plaza	Kain Plaza	Oaks of White Harbor	Sherwood Sites	Whitetail Crossing
Carillon Estates	Field's Hill	Knoll Estates	Oakton Acres	Shadow Ridge	Whitmore
Carriage House Estates	Fox Hill	Kyle Point	Ottawa Center	Smith's West Ridge Estates	Wilcox
Corsini's	Goose Creek Villas	Lincoln Village	Ottawa Industrial Park	Somerset	Windsor Court Apartments
Countryside	Gracefield	MWM	Ottawa North Commercial	South Bluff	Windsor Estates
	Gravely Acres	McKinley Villas	Ottawa Place	South Ridge	Woodridge Subdivision
	Greater Ottawa Unlimited	Meadow Crest	Pembroke	Tanglewood	