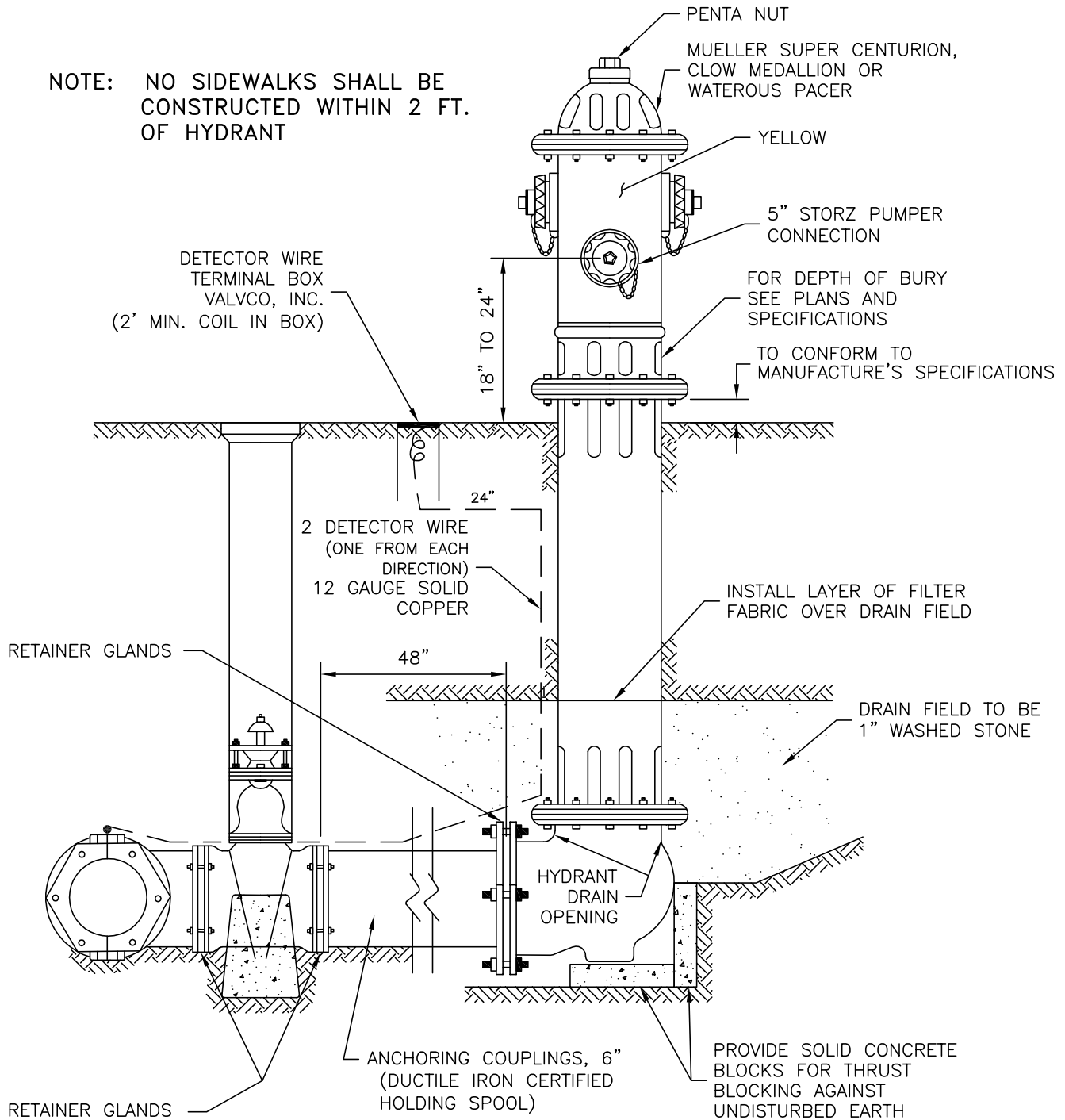


NOTE: NO SIDEWALKS SHALL BE CONSTRUCTED WITHIN 2 FT. OF HYDRANT



NOTES: CONCRETE BASE AND BLOCKING MATERIAL SHALL NOT BLOCK NOR OBSTRUCT HYDRANT DRAIN AS SHOWN IN AWWA MANUAL M 17

ALL FITTINGS SHALL BE: TYLER
AMERICAN FLOW CONTROL
CLOW

ALL BOLTS BELOW GRADE SHALL BE STAINLESS STEEL

ALL MATERIALS TO BE MADE IN U.S.A.

**STANDARD
FIRE HYDRANT
INSTALLATION**

CITY OF OTTAWA

DRG. 4

DECEMBER 15, 2008